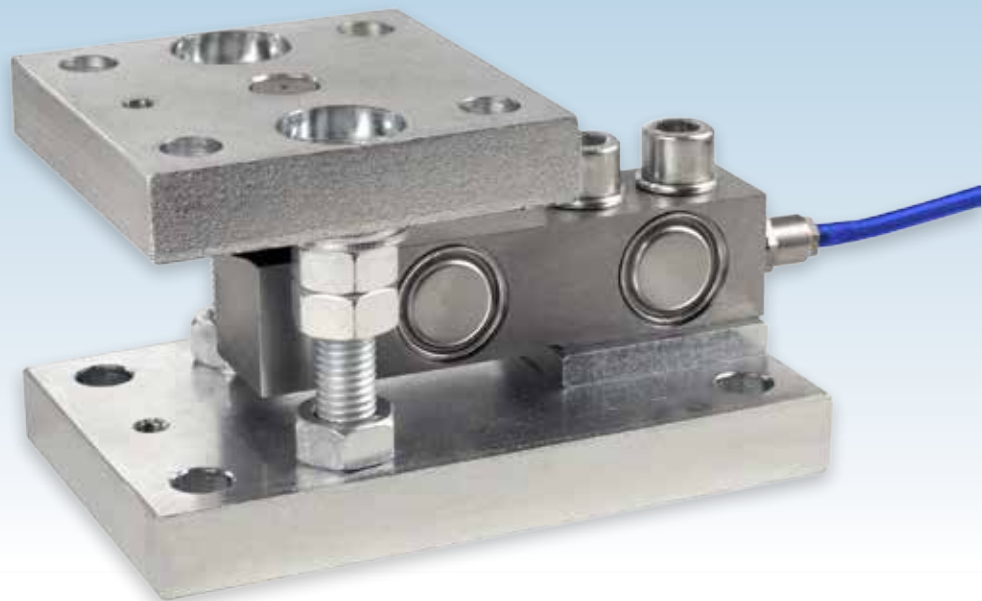


MOUNTING ASSEMBLY FOR SHEAR BEAM LOAD CELLS

capacities 300kg - 5000kg



These load cell mounts are suitable for weighing platforms, bag fillers, belt weighers and tank weighing in the Food Processing, Chemical, Pharmaceutical and general Bulk Handling industries.

The fully welded stainless steel T85 load cells used in this mounting assembly are hermetically sealed to meet IP68 and IP69K and can be used in the harsh industrial environments.

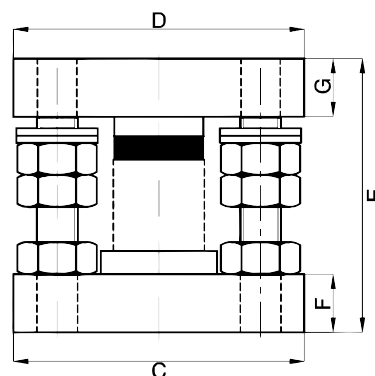
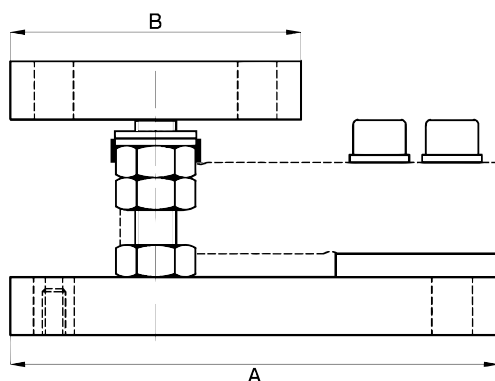
Available with intrinsically safe ATEX certification for use in both gas and dust zones. Certification for use in zones 20,21 and 22 without safety barriers is also available.

For applications in aggressive environments where stress corrosion or acid attack is an issue, a special parylene coating can be specified as an option, as can custom cable lengths for volume OEM customers.

- Stainless steel load sensor
- Mounting Assembly in Mild/Stainless Steel
- Hermetically sealed, fully welded construction
- Sealed to IP68 / IP69K
- 3000 divisions OIML R60 Class C
- Ease of installation
- Load cell warranty 5 years against mfg. defects
- High Integrity cable entry
- High durability PU cable
- Available in  version

LA85

technical specification...



LA85 Load Cell ATEX Certification

Code	Temperature Class	Parameters	Application
II 1 GD Ex ia II CT4..T6 Ga IP68T85°C Ex ia IIIC T135°C T85°C Da Ex ta IIIC T85°C Da	T4	Pi = 1.3W	Gas Zones 0, 1, 2 with safety barriers
	T5	Pi = 0.8W	
	T6	Pi = 0.53W	Dust Zones 20, 21, 22 without safety barriers

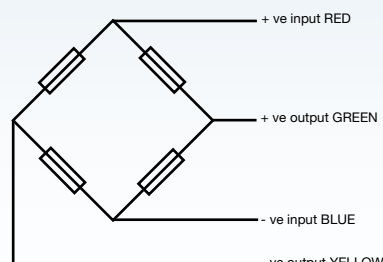
Dimensions

Range (kg)	300 - 2500	3000 - 5000
A	168	212
B	100	120
C	100	120
D	100	120
E	94	113
F	20	25
G	20	25

T85 Load Cell

	Load cell specification	Units
Load Cell Capacities	300, 500, 750, 1000, 1500, 2000, 2500, 3000, 5000	Kg
Rated Output	2	mV/V**
Accuracy Class	3000	n.OIML
Combined Error	< ± 0.017	%*
Non-repeatability	< ± 0.015	%*
Creep (30 minutes)	< ± 0.016	%*
Temperature Effect on Zero Balance	< ± 0.002	%* / °C
Temperature Effect on Span	< ± 0.0012	%* / °C
Compensated Temperature Range	0 to +50	°C
Operating Temperature Range	-30 to +70	°C
Safe Overload	150	%*
Ultimate Overload	200	%*
Zero Balance	< ± 2	%*
Input Resistance	400	Ω ± 20
Output Resistance	350	Ω ± 3
Insulation Resistance	> 5000	MΩ @ 100V
Recommended Supply Voltage	5-15	V
Maximum Supply Voltage	15	V
Environmental Protection	IP68 / IP69K	
Cable length	5	m
Cable Material	Polyurethane	
Nominal Shipping Weight (300 - 2500kg)	6.1	kg
Nominal Shipping Weight (3000 - 5000kg)	11.2	kg

Dimensions in mm



Electrical Connections

Via 4 wire, 5.7mm diameter, screened polyurethane cable.

Screen not connected electrically to load cell.

Construction

T85 load cell: stainless steel

Option

For low cost applications, Nickel plated Alloy Steel Shear beam load cell model T85-N is available with Mild Steel mounting assemblies for up to 2000kg capacity.

* With respect to rated load

** Pre-corner adjustment optimised at ± 0.05% by output current calibration



KANTA KING TECHNOLOGIES PVT LTD.

Channel Partner

+91.9560915555

info@kantaking.com

C-25, 2nd Floor, DSIDC Complex, Kirti Nagar, New Delhi - 110015

www.kantaking.com

Our policy is one of continuous product enhancement. We therefore reserve the right to incorporate technical modifications without prior notification.

